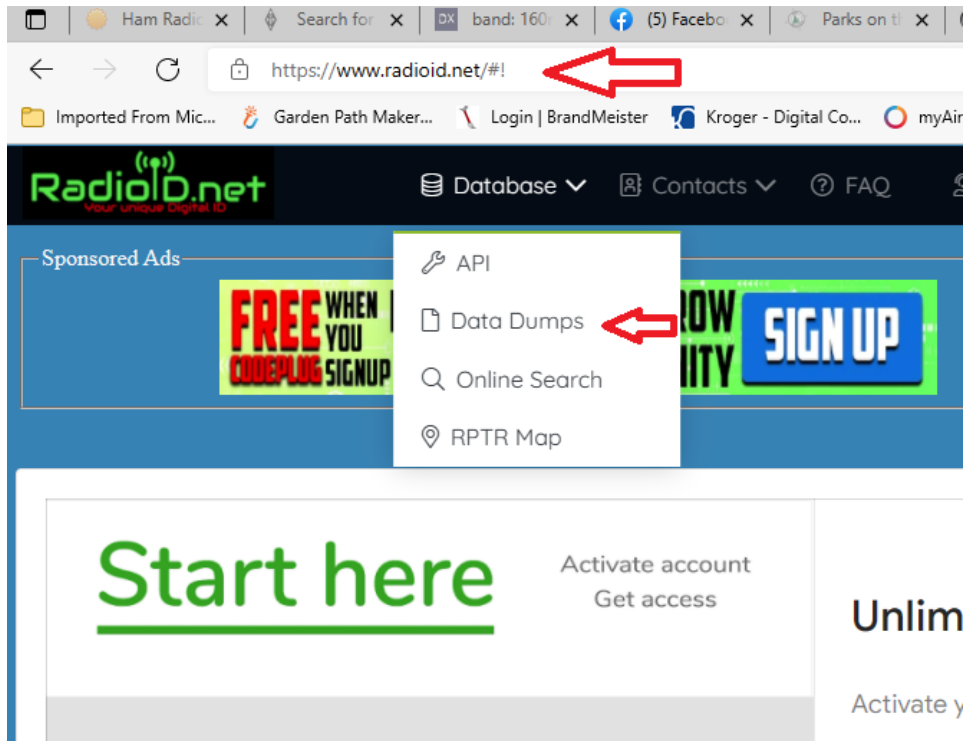


To UPDATE the Digital Contact list in the ANYTONE 878

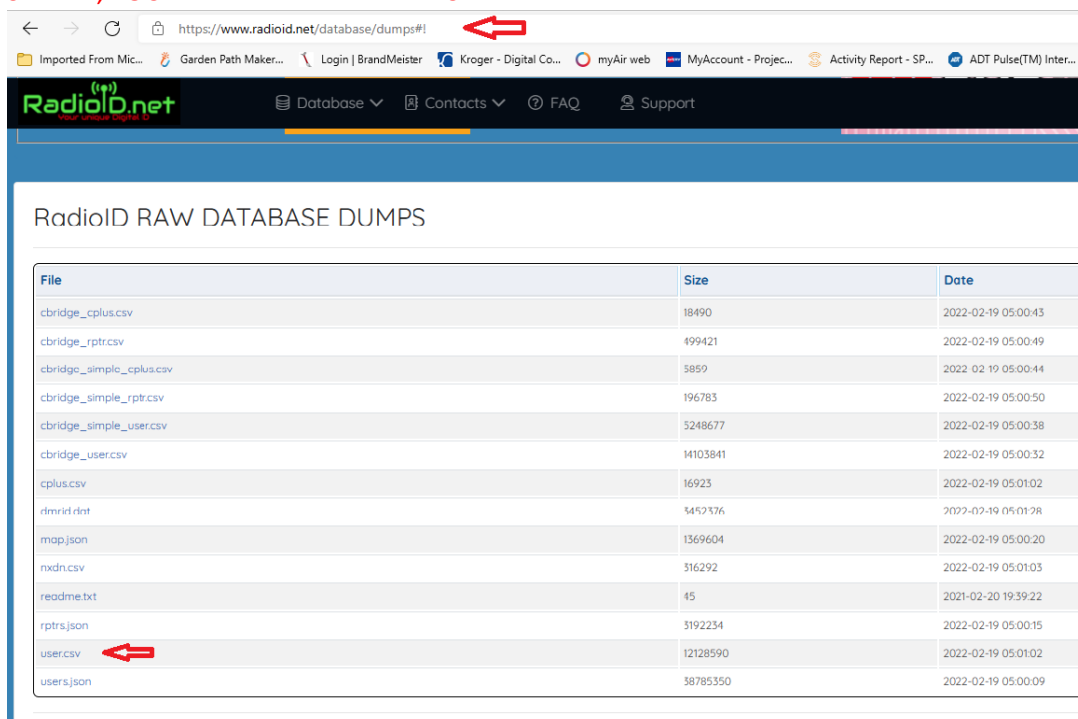
Go to [www.radioid.net/](http://www.radioid.net/)

Once the page opens, look for DATABASE, click on the arrow and select DATA DUMPS

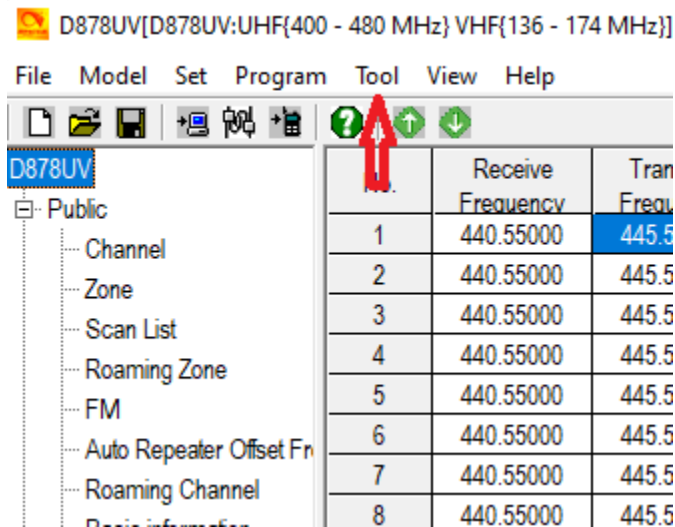


The page will change and look like the page below.

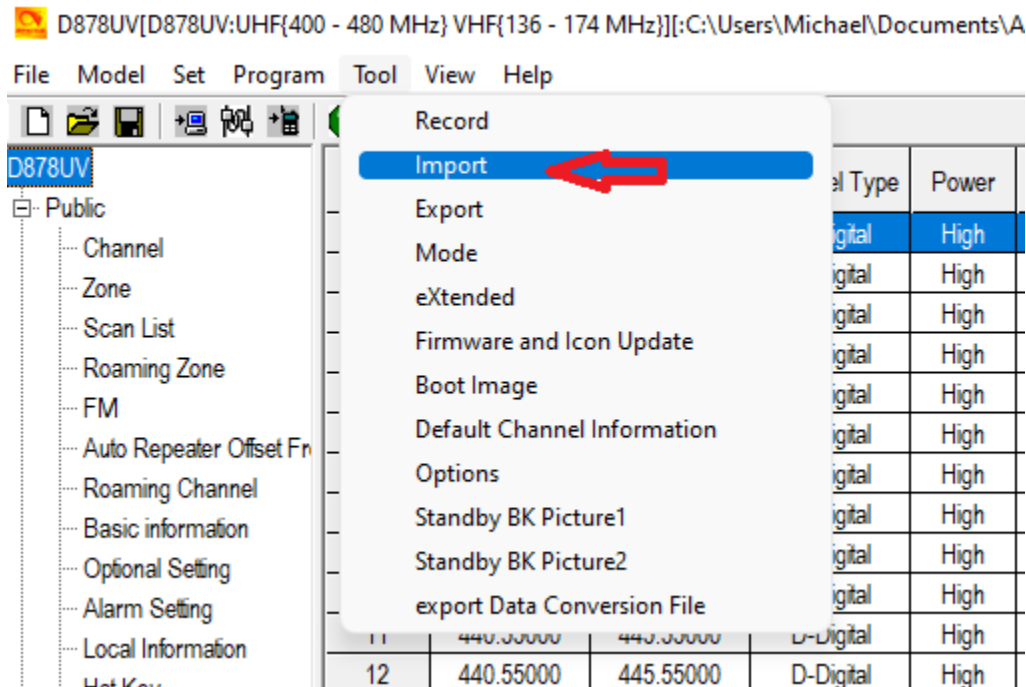
Scroll down the page and look for USER.CSV click on it and it will download to your computer. **REMEMBER WHERE YOU SAVE IT, YOU WILL NEED IT IN A MINUTE.**



Open the software for your ANYTONE. And click on TOOL

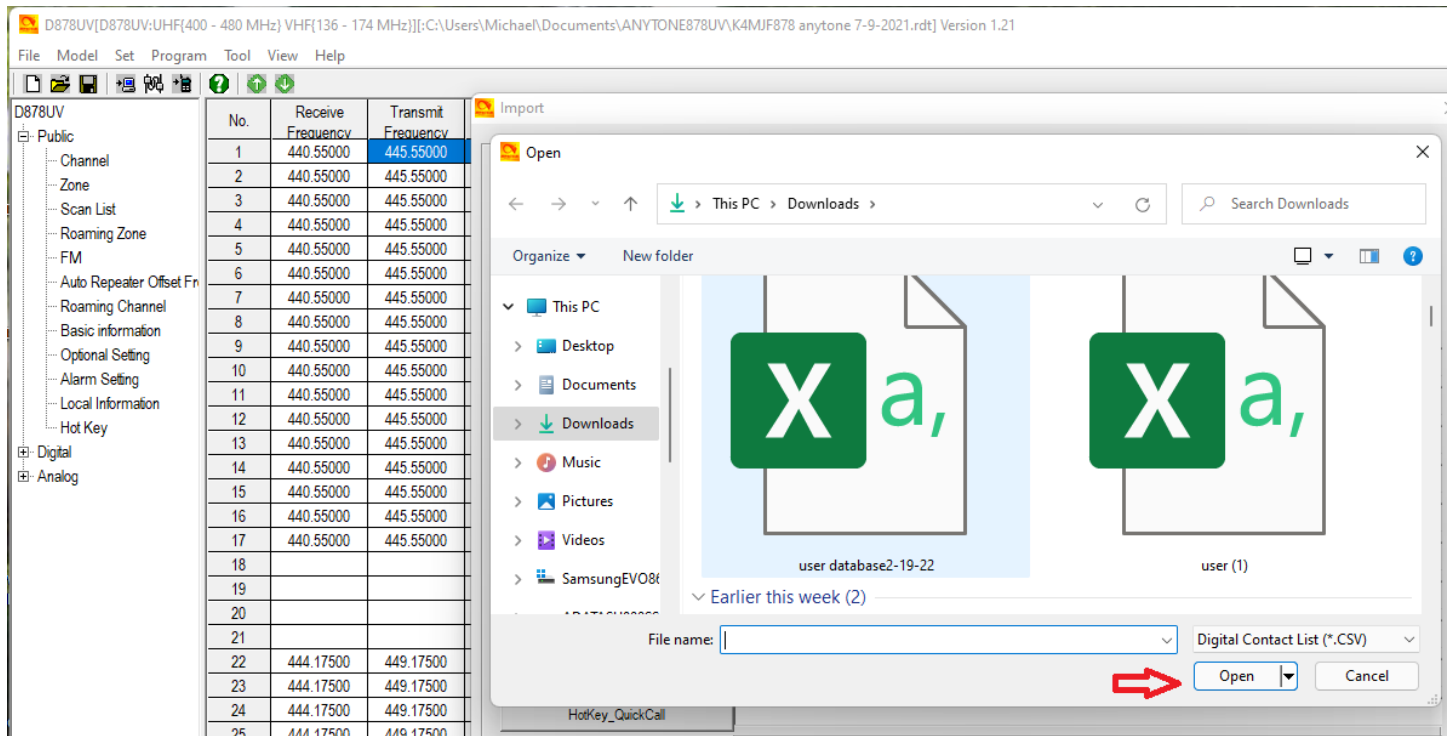


You'll see this, Click on IMPORT

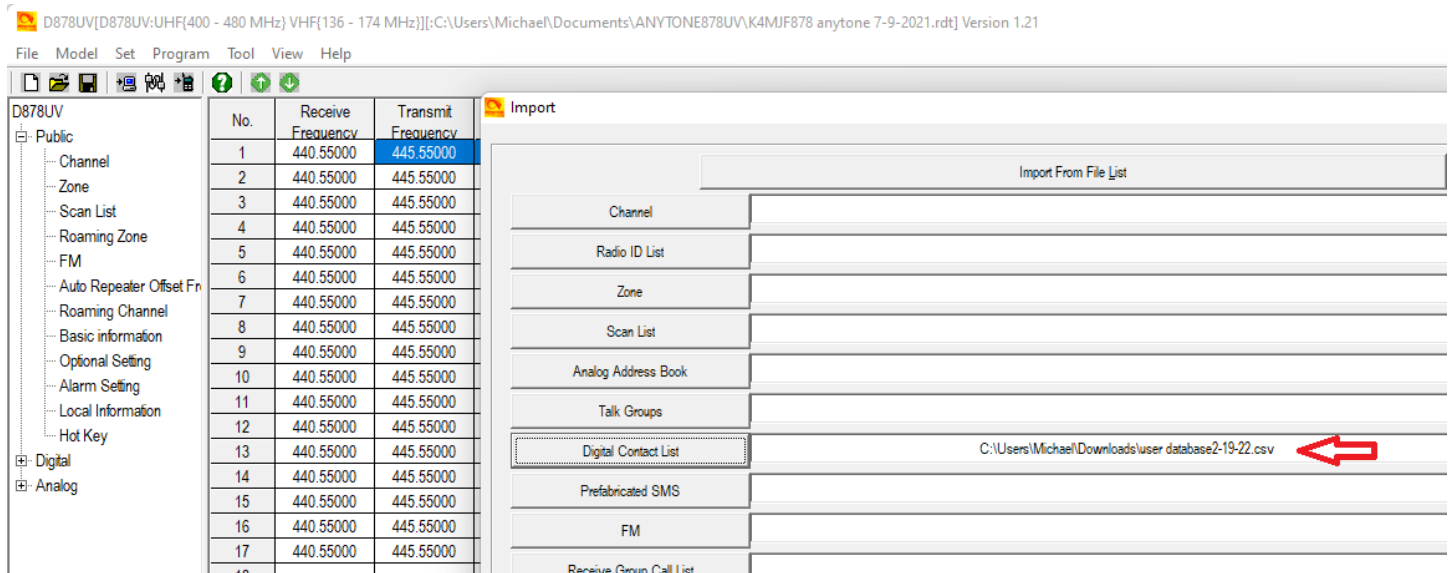




You'll see this box open up. Go to where you saved the USER.CSV file and click on it, then click OK



If everything you did was successful, you'll see the name of the file and its location beside the box labeled Digital Contact List. Now you are ready to write that file to the code plug.



Click on the IMPORT, and you'll see a box open that shows progress. BE PATIENT!! It's a BIG file and takes a few minutes to process.

D878UVII[D878UVII:UHF(400 - 480 MHz) VHF(136 - 174 MHz)][:C:\Users\Michael\Documents\ANYTONE878UV\KK6OKUoriginal2-16-2022.rdt] Version 2.02 N

File Model Set Program Tool View Help

D878UVII

- Common Setting
  - Channel
  - Zone
  - Scan List
  - Roaming Zone
  - FM
  - Auto Repeater Offset Frequer
  - Roaming Channel
  - Device information
  - Optional Setting
  - Alarm Setting
  - Local Information
  - Hot Key
- Digital
- Analog

No.	Receive Frequency	Transmit Frequency
1	440.55000	445.55000
2	440.55000	445.55000
3	440.55000	445.55000
4	440.55000	445.55000
5	440.55000	445.55000
6	440.55000	445.55000
7	440.55000	445.55000
8	440.55000	445.55000
9	440.55000	445.55000
10	440.55000	445.55000
11	440.55000	445.55000
12	440.55000	445.55000
13	440.55000	445.55000
14	440.55000	445.55000
15	440.55000	445.55000
16	440.55000	445.55000
17	440.55000	445.55000
18		
19		
20		
21		
22	444.17500	449.17500
23	444.17500	449.17500
24	444.17500	449.17500
25	444.17500	449.17500
26	444.17500	449.17500
27	444.17500	449.17500
28	444.17500	449.17500
29	444.17500	449.17500
30	444.17500	449.17500
31	444.17500	449.17500
32	444.17500	449.17500

Import

Import From File List

- Channel
- Radio ID List
- Zone
- Scan List
- Analog Address Book
- Talk Groups
- Digital Contact List C:\Users\Michael\Downloads\user database2-19-22
- Prefabricated SMS
- FM
- Receive Group Call List
- 5Tone Encode
- 2Tone Encode
- DTMF Encode
- HotKey\_QuickCall
- HotKey\_State
- HotKey\_HotKey
- Auto Repeater Offset Frequencys
- Roaming Channel
- Roaming Zone
- APRS

D878UVII

Menu Tool Import

This feature allow importing from an excel spreadsheet each of the program

Import Close

Once it's finished, click on FILE, then Save to save the changes to the code plug.

You are now ready to load the DIGITAL CONTACTS into your radio!!!

**REMEMBER TO CLICK ON BOTH CHECK BOXES!!!**

D878UV [D878UV.UHF(400 - 480 MHz) VHF(136 - 174 MHz)] [C:\Users\Michael\Documents\ANYTONE878UV\K4MJF878 anytone 7-9-2021.rdt] Version 1.21

No.	Receive Frequency	Transmit Frequency	Channel Type	Power	Band Width	CTCSS/DCS Decode	CTCSS/DCS Encode	Channel Name	Contact	Radio ID	Optional Signal
1	440.55000	445.55000	D-Digital	High	12.5K	Off	Off	W4KEV TN SW	TN-SW 3147	Mike K4MJF	
2	440.55000	445.55000	D-Digital	High	12.5K	Off	Off	W4KEV TG9	Local 9 (TG-9)	Mike K4MJF	
3	440.55000	445.55000	D-Digital	High	12.5K	Off	Off	W4KEV TAC 310	TAC 310	Mike K4MJF	
4	440.55000	445.55000	D-Digital	High	12.5K	Off	Off	W4KEV TAC 311	TAC 311	Mike K4MJF	
5	440.55000	445.55000	D-Digital	High	12.5K	Off	Off	W4KEV TAC 312	TAC 312	Mike K4MJF	
6	440.55000	445.55000	D-Digital	High	12.5K	Off	Off	W4KEV MRYVLE DMR	MARYVILLE	Mike K4MJF	
7	440.55000	445.55000	D-Digital	High	12.5K	Off	Off	W4KEV SOUTH E	SOUTHEAST	Mike K4MJF	
8	440.55000	445.55000	D-Digital	High	12.5K	Off	Off	W3KEV KNOX CO	Knox Co	Mike K4MJF	
9	440.55000	445.55000	D-Digital	High	12.5K	Off	Off	W4KEV GRNVILLE	GREENVILLE	Mike K4MJF	
10	440.55000	445.55000	D-Digital	High	12.5K	Off	Off	W4KEV SEVIER CO	Sevier Co	Mike K4MJF	
11	440.55000	445.55000	D-Digital	High	12.5K	Off	Off	W4KEV NW 3100	NAT WIDE 3100	Mike K4MJF	
12	440.55000	445.55000	D-Digital	High	12.5K	Off	Off	W4KEV SKYWARN	SKYWARN	Mike K4MJF	
13	440.55000	445.55000	D-Digital	High	12.5K	Off	Off	W4KEV WW-91	World-Wide (91)	Mike K4MJF	
14	440.55000	445.55000	D-Digital	High	12.5K	Off	Off	W4KEV NA (TG3)	NA (TG3)	Mike K4MJF	
15	440.55000	445.55000	D-Digital	High	12.5K	Off	Off	W4KEV TOP	GreenTOP	Mike K4MJF	
16	440.55000	445.55000	D-Digital	High	12.5K	Off	Off	W4KEV TRO	KNOX METRO	Mike K4MJF	
17	440.55000	445.55000	D-Digital	High	12.5K	Off	Off	W4KEV TRO	PARROT	Mike K4MJF	
18											
19											
20											
21											
22	444.17500	449.17500	D-Digital	High	12.5K	Off	Off	BVR RDG TN SW	TN-SW 3147	Mike K4MJF	
23	444.17500	449.17500	D-Digital	High	12.5K	Off	Off	BVR RDG TG 9	Local 9 (TG-9)	Mike K4MJF	
24	444.17500	449.17500	D-Digital	High	12.5K	Off	Off	BVR RDG TAC 310	TAC 310	Mike K4MJF	
25	444.17500	449.17500	D-Digital	High	12.5K	Off	Off	BVR RDG TAC 311	TAC 311	Mike K4MJF	
26	444.17500	449.17500	D-Digital	High	12.5K	Off	Off	BVR RDG TAC 312	TAC 312	Mike K4MJF	
27	444.17500	449.17500	D-Digital	High	12.5K	Off	Off	BVR RDG MRYVILLE	MARYVILLE	Mike K4MJF	
28	444.17500	449.17500	D-Digital	High	12.5K	Off	Off	BVR RDG SE TG	SOUTHEAST	Mike K4MJF	
29	444.17500	449.17500	D-Digital	High	12.5K	Off	Off	BVR RDG KX CO	Knox Co	Mike K4MJF	
30	444.17500	449.17500	D-Digital	High	12.5K	Off	Off	BVR RDG GRNVILLE	GREENVILLE	Mike K4MJF	
31	444.17500	449.17500	D-Digital	High	12.5K	Off	Off	BVR RDG SEVIRVILLE	Sevier Co	Mike K4MJF	
32	444.17500	449.17500	D-Digital	High	12.5K	Off	Off	BVR RDG NW 3100	NAT WIDE 3100	Mike K4MJF	

**Read or Write Objects**

Digital Contact List

Other Data

OK

**Read or Write Objects Window**

Write the file to your radio. Select if you want to write just the (\*Other Data) (all radio parameters) and/or Digital Contact List when loading the CodePlug into the radio.

Read the file from your radio. Select if you want to Read just the (\*Other Data) (all radio parameters) and/or Digital Contact List from the radio.

5:36 PM 2/19/2022

Once you click OK, sit back and the radio will be loaded with the updated code plug AND the latest digital contact list. The radio will reboot after it's done and will be ready to use.